

AXIAL SKELETON LAB VIDEO RECORDING LINKS

Dr. Lisa Brinn

Video Recording Links for Skull Lab

- [Video frontal, parietal, occipital, lacrimal, maxilla, palatine, and mandible bones, in addition to sutures](#)
- [Video #2 of frontal, parietal, occipital, lacrimal, maxilla, palatine, and mandible bones, in addition to sutures](#)
- [Video of sphenoid, ethmoid, temporal, zygomatic, nasal and vomer bones in addition to nasal septum](#)
- [Video #2 of sphenoid, ethmoid, temporal, zygomatic, nasal and vomer bones in addition to nasal septum](#)

Cranial Bones

Bone	Bone Features
Frontal bone	<ul style="list-style-type: none"> • supraorbital foramen
Parietal bones	
Temporal bones	<ul style="list-style-type: none"> • internal acoustic (auditory) canal • external acoustic (auditory) canal • mastoid process • styloid process • mandibular fossa • carotid canal
Occipital bone	<ul style="list-style-type: none"> • foramen magnum • hypoglossal canal • occipital condyles
Ethmoid bone	<ul style="list-style-type: none"> • cribriform plate • crista galli • perpendicular plate
Sphenoid bone	<ul style="list-style-type: none"> • optic canal • foramen rotundum • foramen ovale • foramen spinosum • sella turcica

Facial Bones

Bone	Bone Features
Nasal bones	
Lacrimal bones	
Maxilla bones	<ul style="list-style-type: none">• infraorbital foramen
Palatine bones	
Mandible	<ul style="list-style-type: none">• mandibular condyle• mandibular foramen• mental foramen
Vomer bone	
Nasal bones	
Nasal septum	
Zygomatic bones	

Sutures

- sagittal suture
- coronal suture
- squamosal suture
- lambdoidal suture

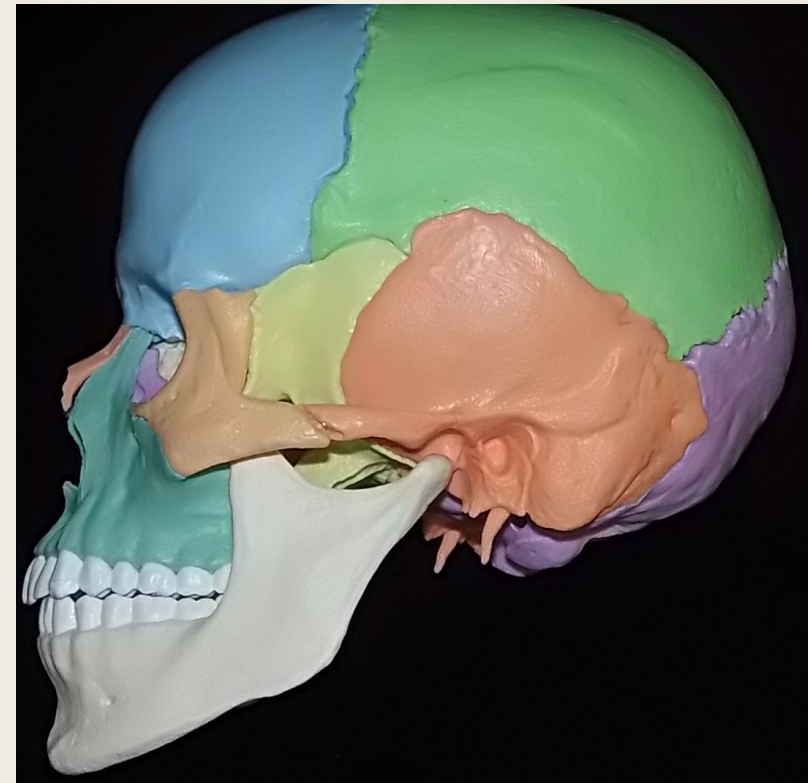
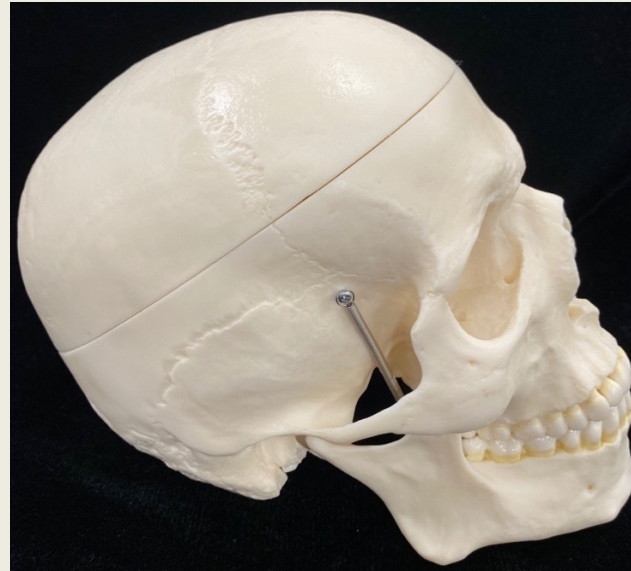
Shared Bone Features

Bones	Bone Features
Temporal and Occipital Bones	• jugular foramen
Sphenoid and Maxillae Bones	• inferior orbital fissure
Sphenoid, Ethmoid and Palatine Bones	• superior orbital fissure

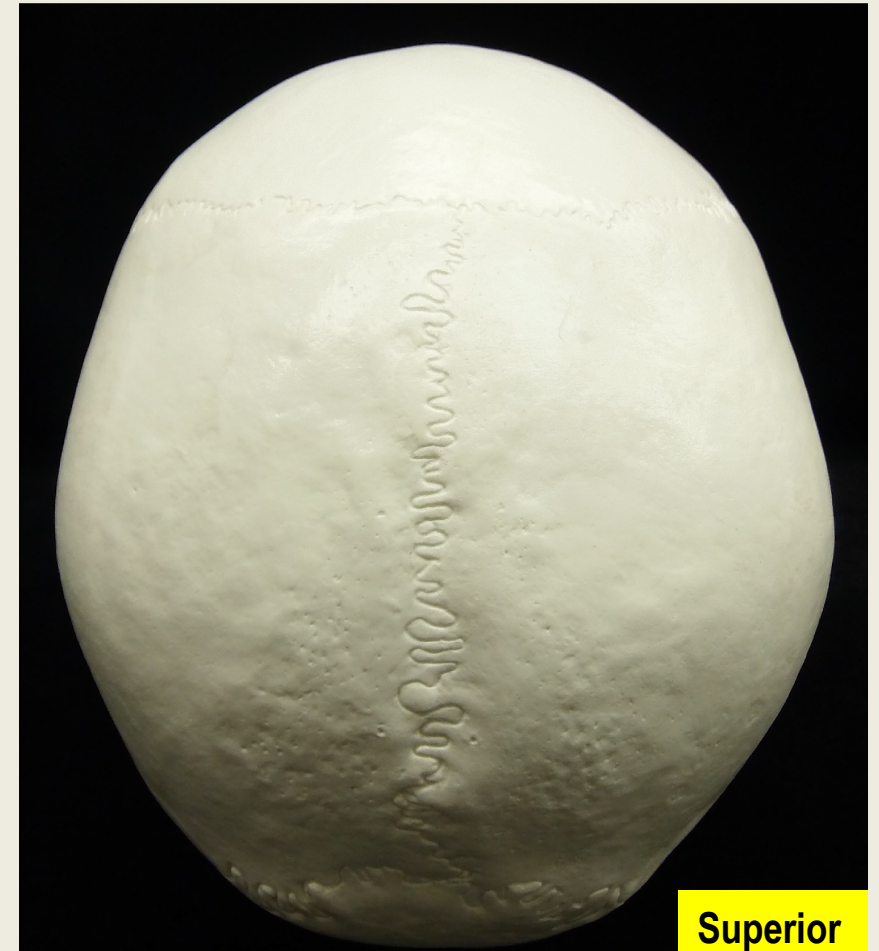
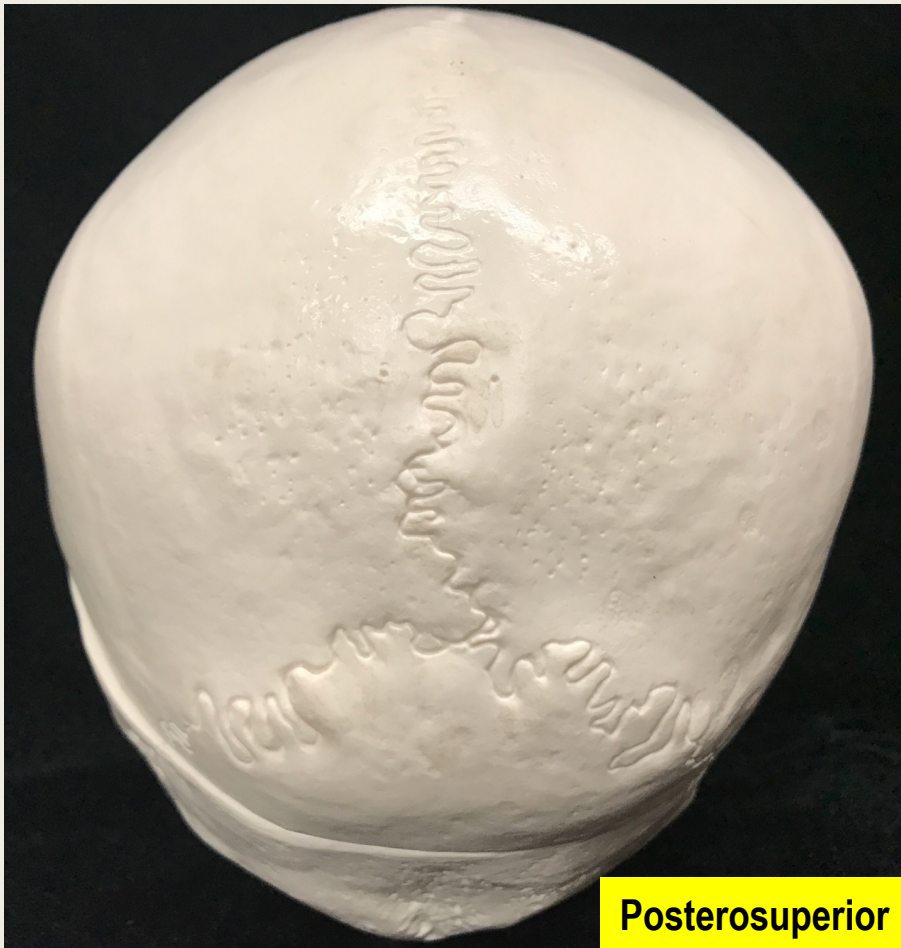
Skull anterior view



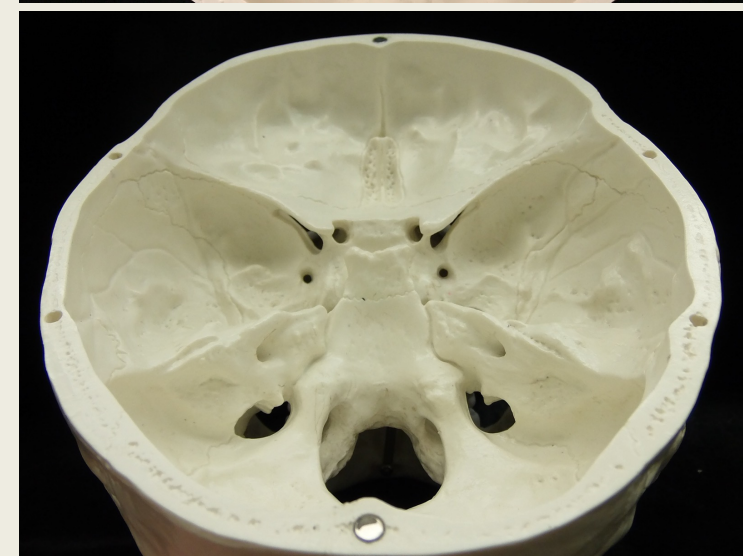
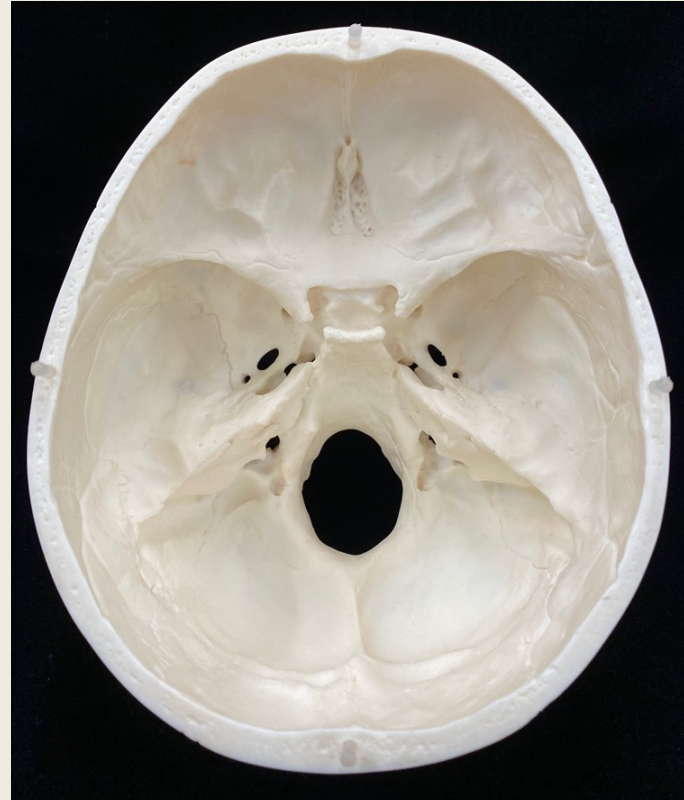
Skull lateral view



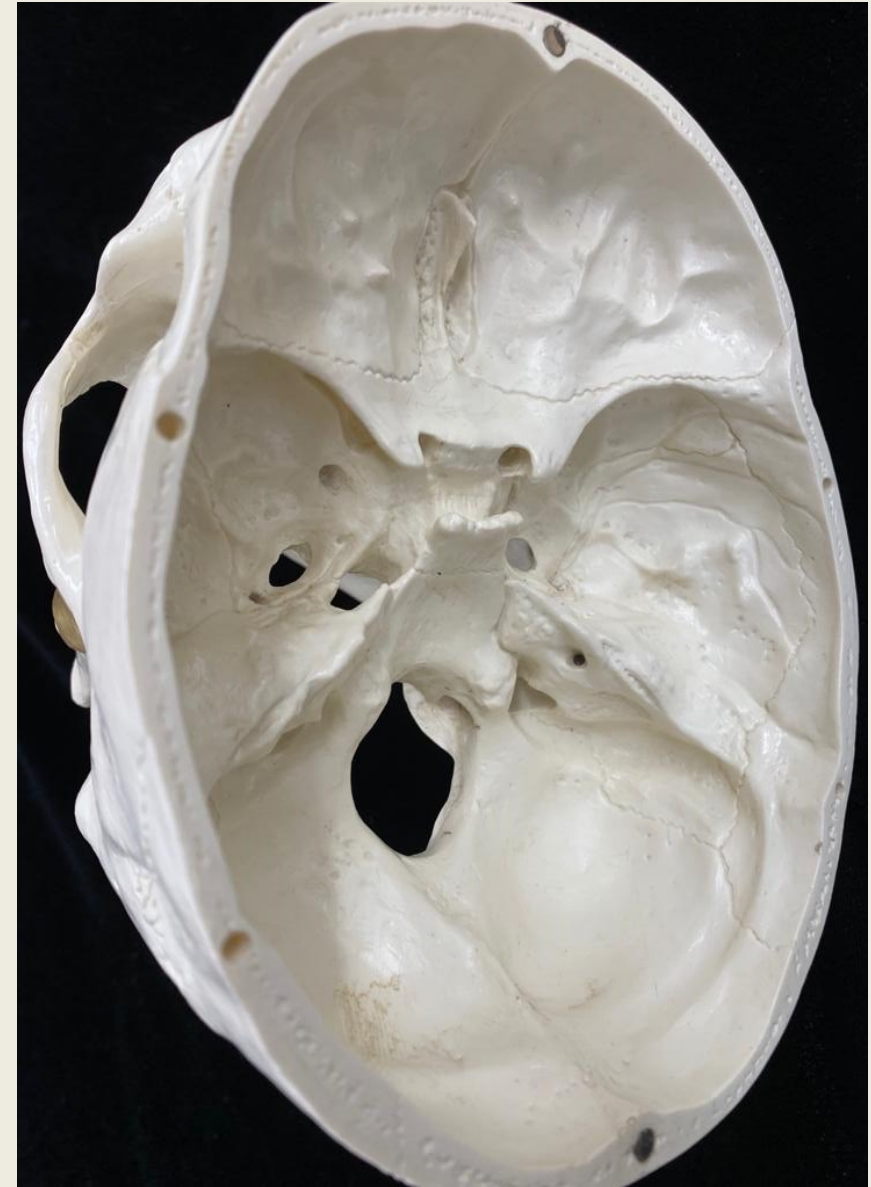
Skull posterosuperior and superior view



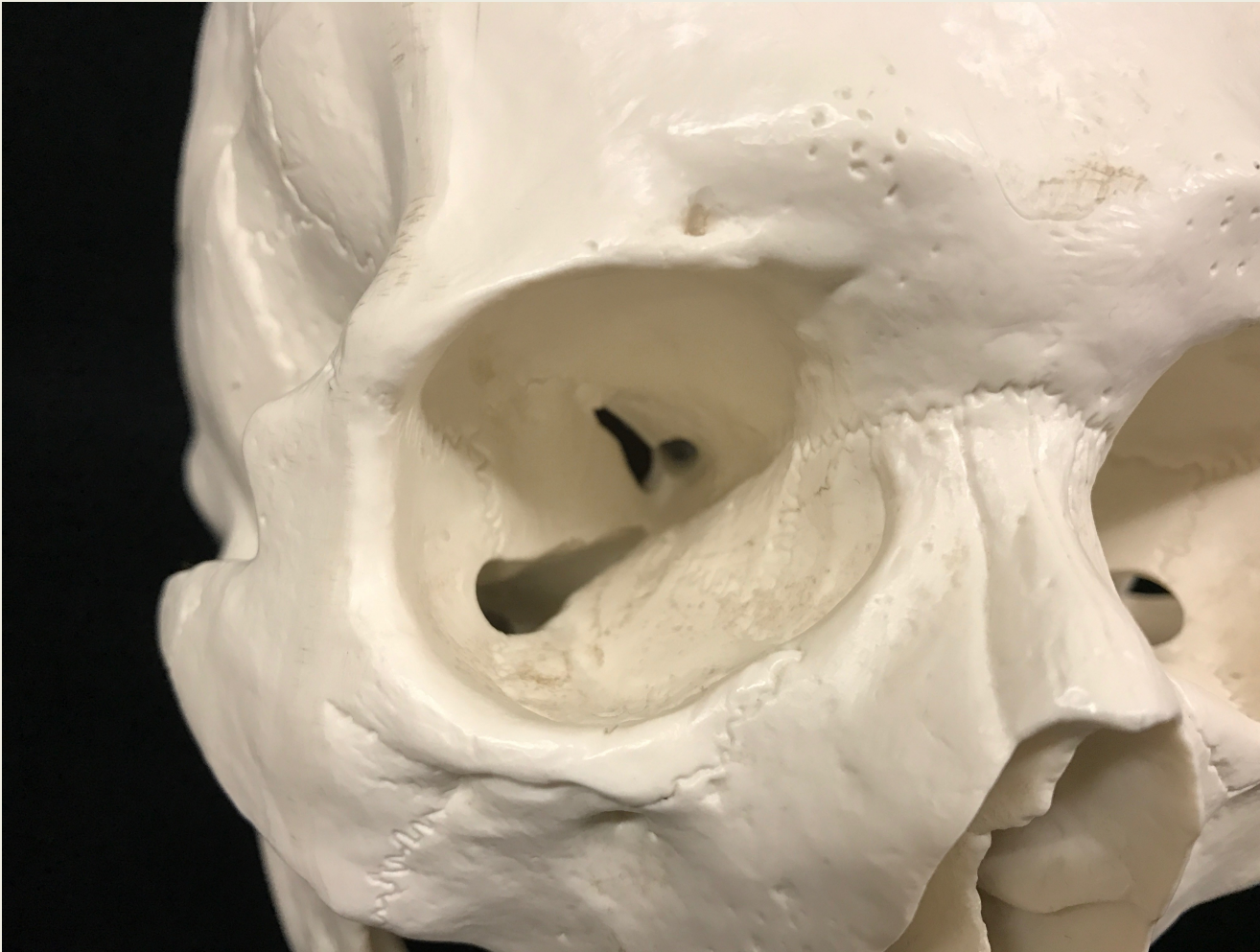
Skull - Deep Structures superior view



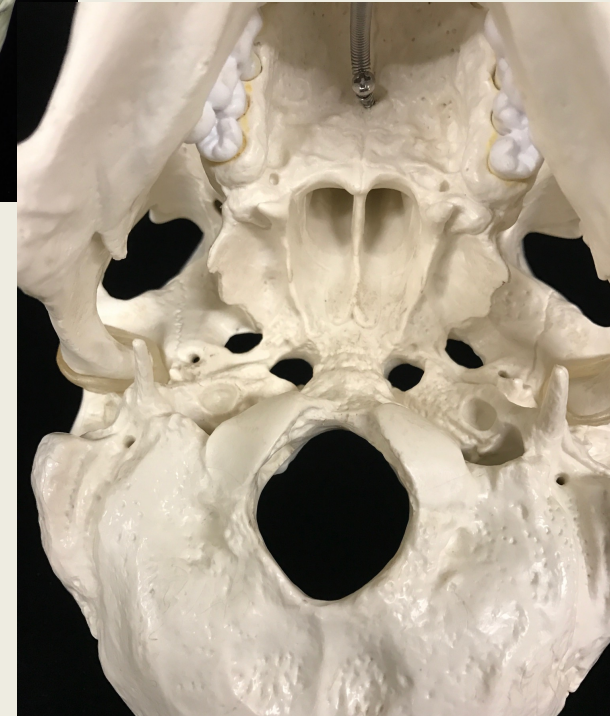
Skull – Deep Structures superolateral view



Skull anterolateral view



Skull inferior view



Video Recording Links for Vertebrae Lab

- [Video of all Vertabrae](#)
- [Video of Cervical Vertebra](#)
- [Video of Thoracic Vertebrae](#)
- [Video of Lumbar Vertebra](#)
- [Intervertebral Foreman & Coccyx](#)
- [Video Comparing Thoracic and Lumbar Vertebrae](#)
- [Video of Sacrum](#)
- [Video of Sternum](#)
- [Video of Sternum #2](#)

Vertebral Bone Features

Bone	Bone Features
Vertebra common features	<ul style="list-style-type: none">• Vertebral foramen• Transverse process• Superior articular facet• Inferior articular facet
Cervical vertebra (7)	<ul style="list-style-type: none">• Transverse foramen• Atlas (C1)<ul style="list-style-type: none">○ No body○ No spinous process• Axis (C2)<ul style="list-style-type: none">○ Dens
Thoracic vertebra (12) facets:	<ul style="list-style-type: none">• Costal facets<ul style="list-style-type: none">○ Transverse costal facet○ Superior costal facet○ Inferior costal facet
Lumbar vertebra (5)	

Sacral Bone Features and Coccyx

Bone	Bone Features
Sacrum (5 sacral vertebrae fused)	<ul style="list-style-type: none">• Sacral hiatus• Sacral canal• Sacral body• Sacral foramen• Sacral ala
Coccyx	

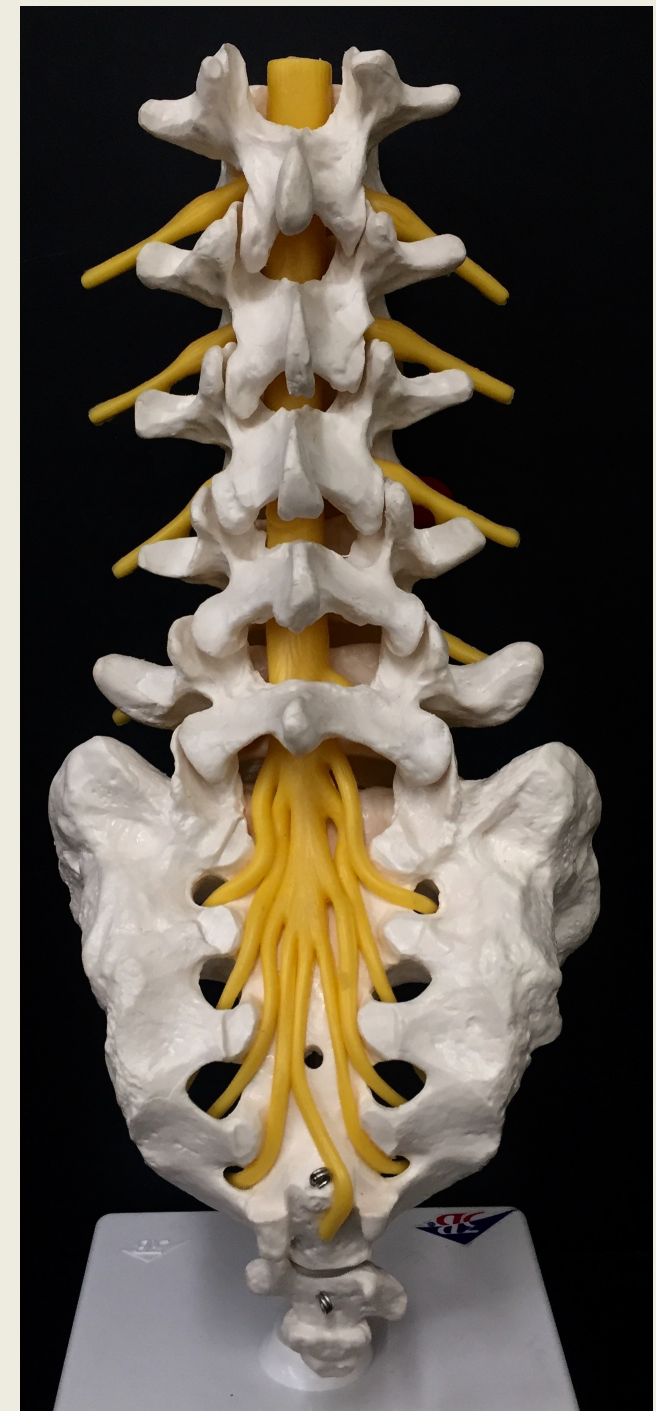
Sternal Bone Features

Bone	Bone Features
Sternum:	<ul style="list-style-type: none">• Manubrium• Body• Xiphoid process

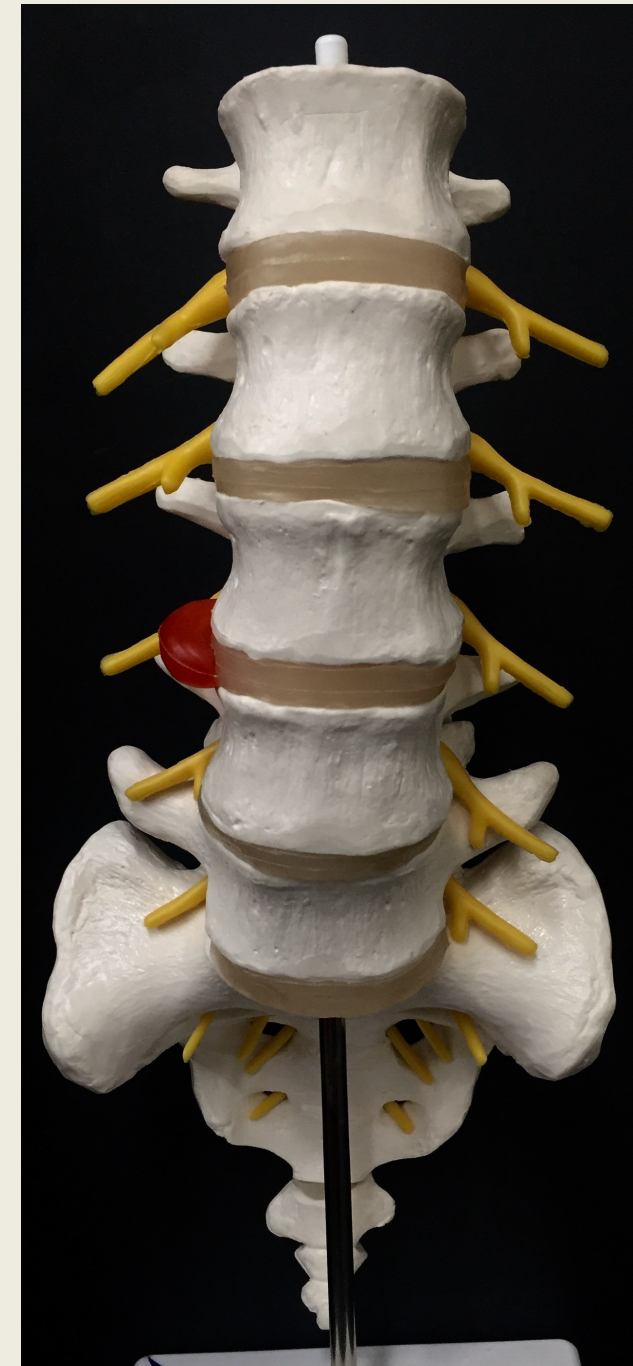
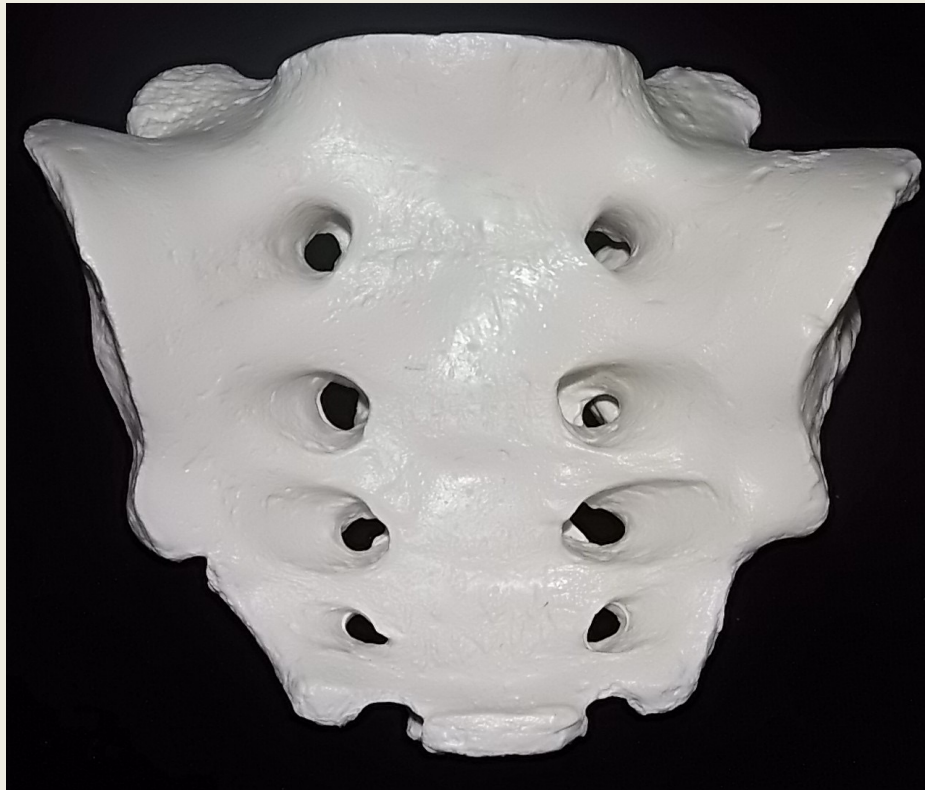
Structure and Opening

- Intervertebral disc
- Intervertebral foramen

Lumbar Vertebral Column, Sacrum and Coccyx posterior view



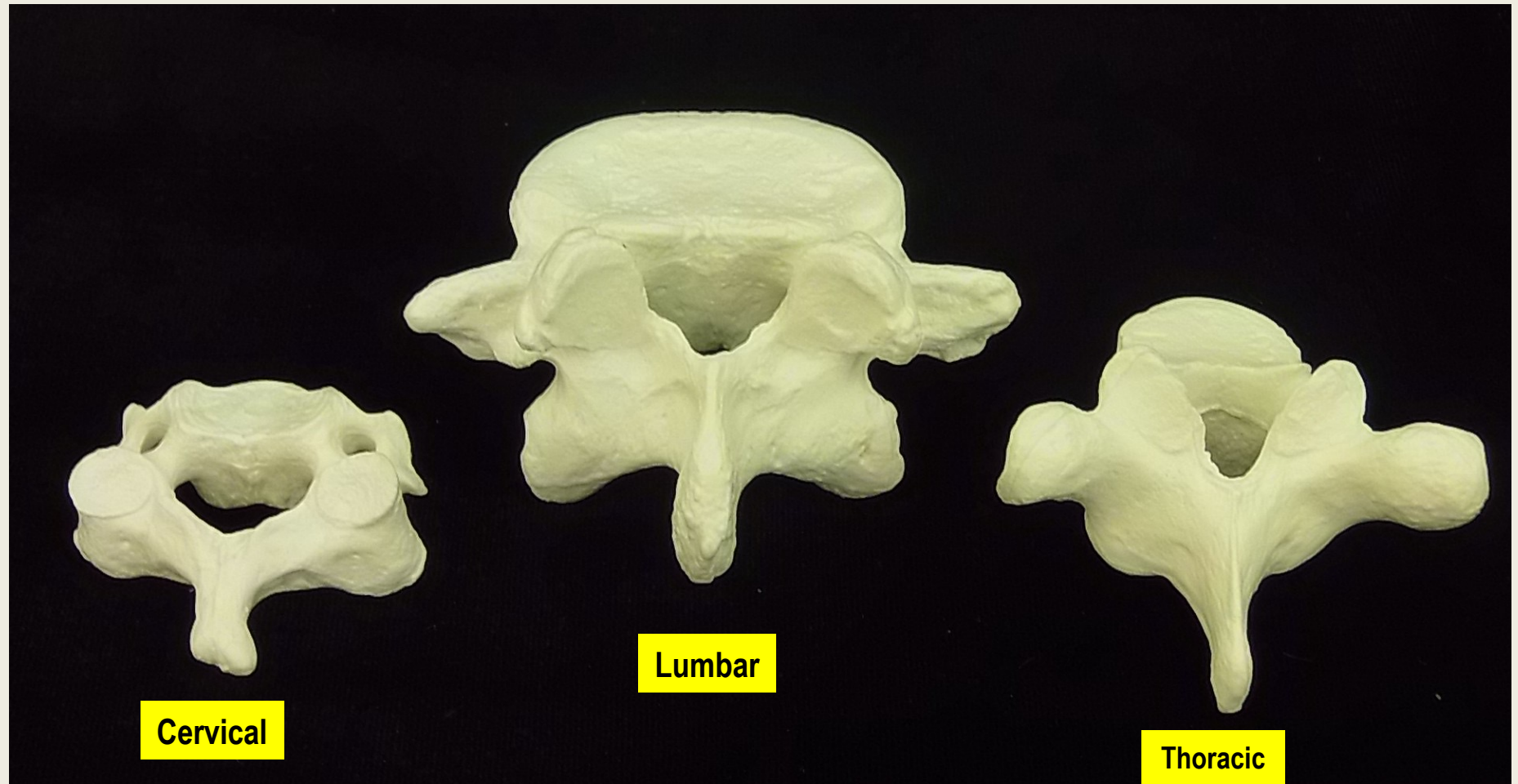
Lumbar Vertebral Column, Sacrum and Coccyx anterior view



Lumbar Vertebral Column, Sacrum and Coccyx lateral view



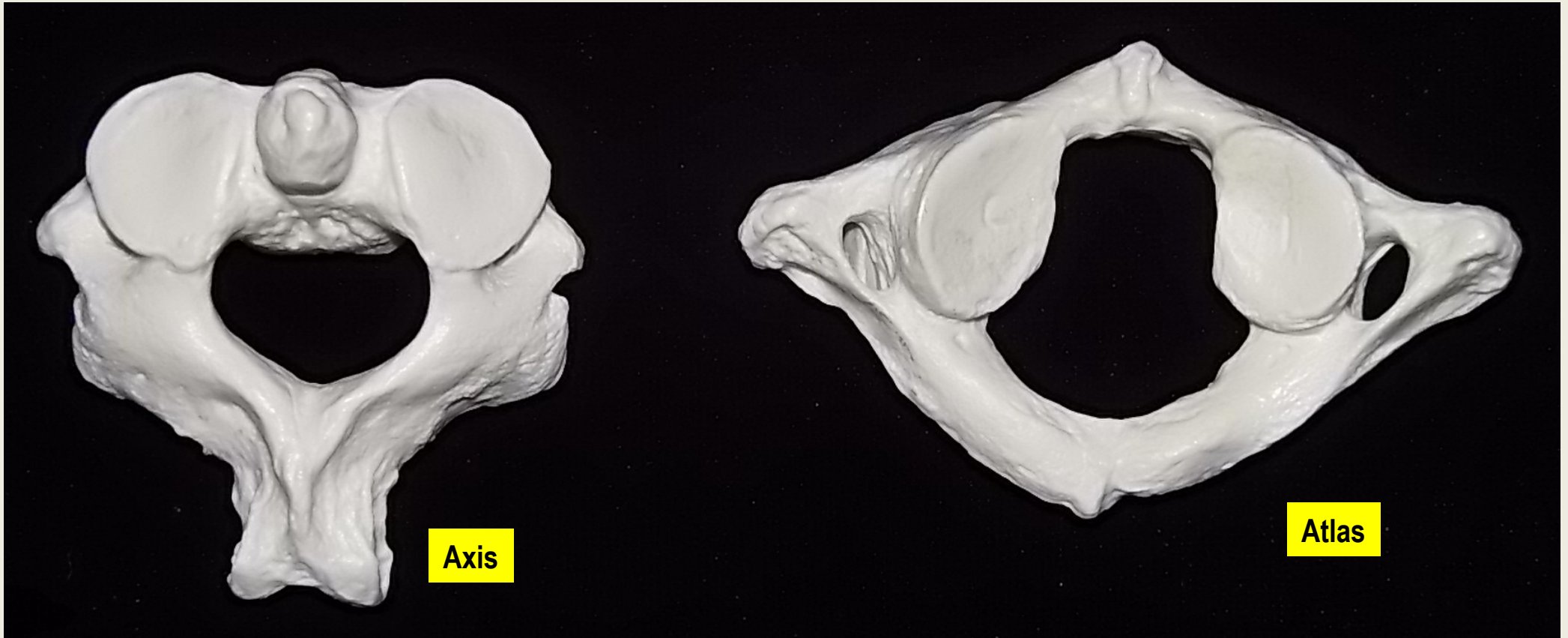
Vertebrae anterior view



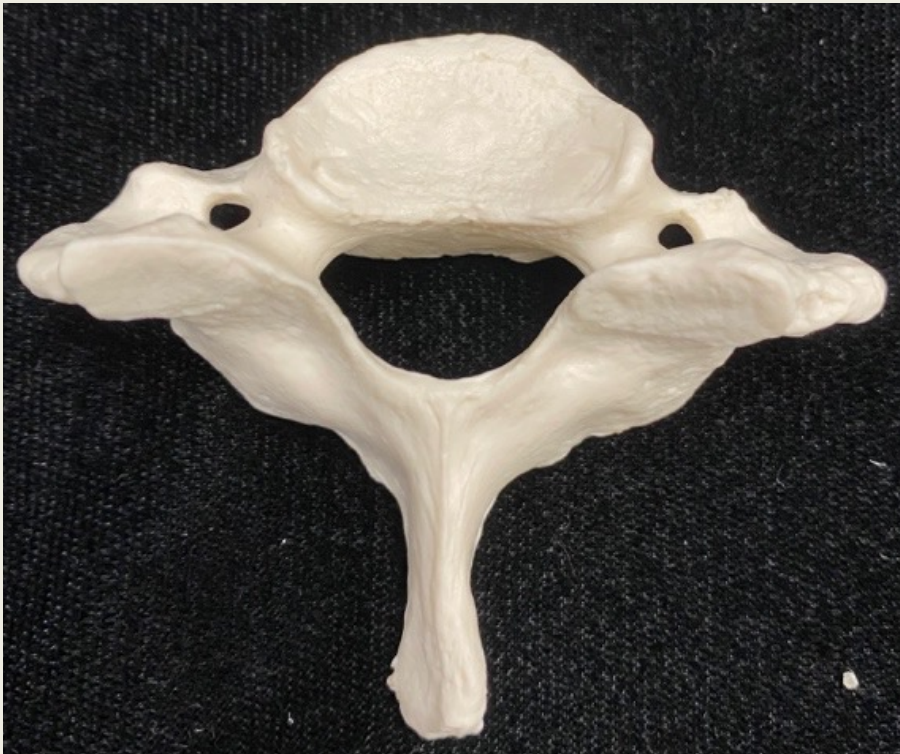
Vertebrae superior view



Cervical Vertebrae – Atlas and Axis superior view



Cervical Vertebra superior view



Cervical Vertebrae anterior view

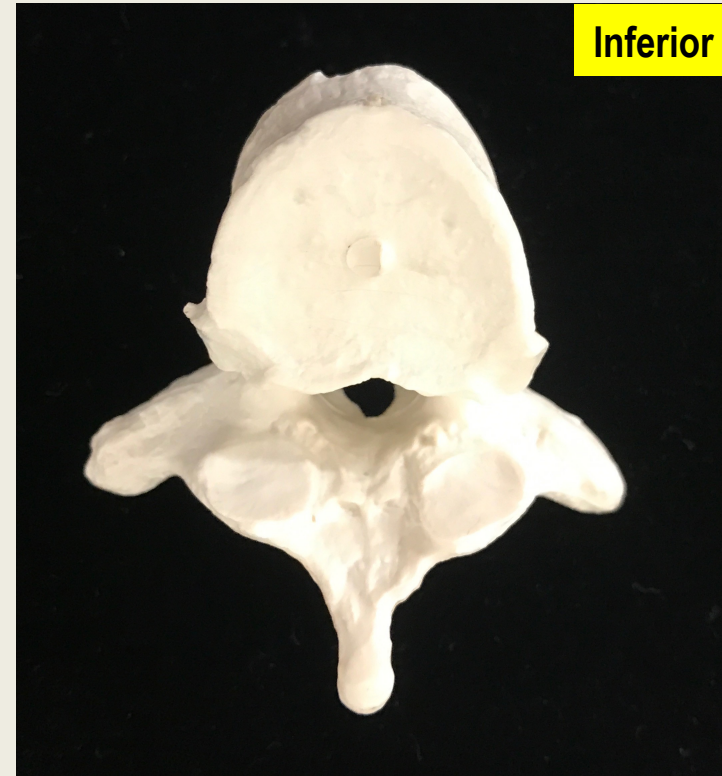
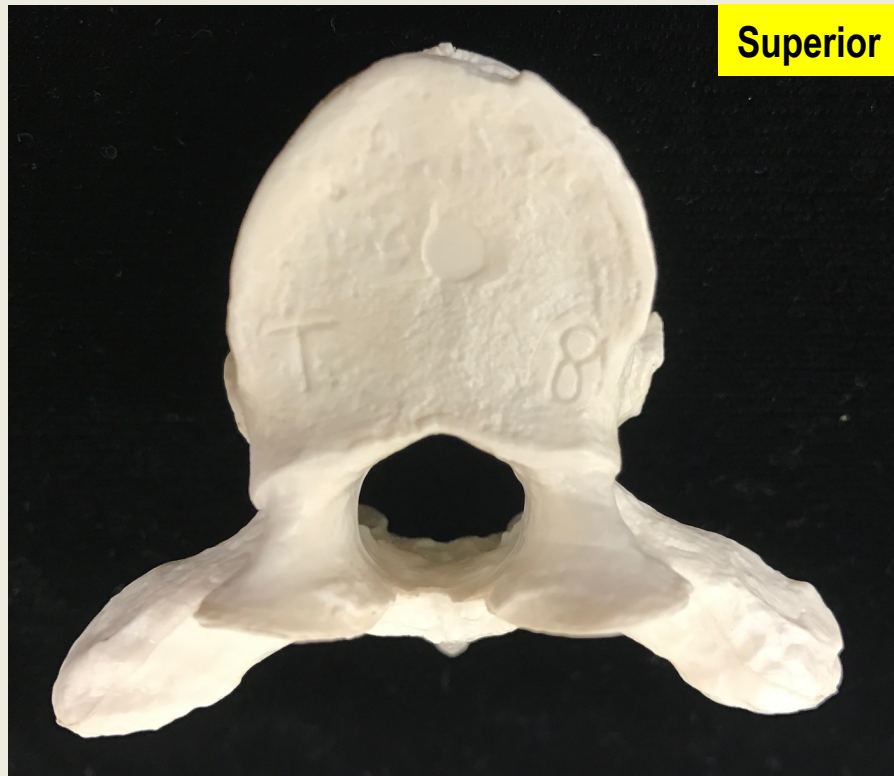


Thoracic Vertebra

anterior and anterosuperior views



Thoracic Vertebrae superior and inferior views



Sternum anterior view

